

TELENIUM^{IP}



Vodavi's IP-based Telephone System



Telenium^{IP}

Vodavi's IP-Based Telephone System

The Evolution of Telephony

The Telenium^{IP} is the IP-based telephony system in Vodavi's portfolio of communications products. With over 20 years experience in the communications industry, Vodavi has seamlessly integrated its award winning features into a next generation communications system – Telenium^{IP}.

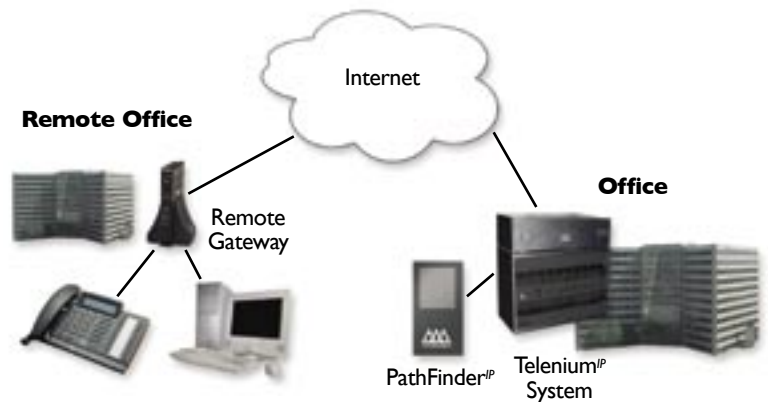
Networked Systems

Geography is no longer a hindrance to establishing integrated communications for your business. Multiple systems can be networked together to simplify office communications using the Internet or private WANs. Long distance toll charges can be avoided while providing simple extension dialing between all offices. The system can also be set up to centralize inbound lines and voice mail for flexible business applications.

Telecommuter Applications

The home office can easily be integrated into the main system with the extended phone applications. Using a standard broadband IP connection, a single IP phone can be a standard extension on the system using the same phone lines and voice mail of the main office. The telecommuter will never miss a call or important voice mail again.

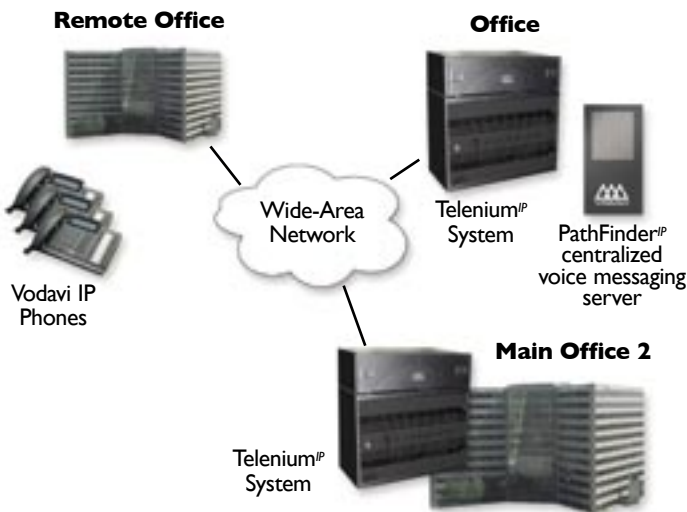
Telenium^{IP} Remote Services Gateway Application



Converged Networks

Utilizing the same network used for all data connections in the office, the Telenium^{IP} brings the same quality voice communications Vodavi has provided for over 20 years. An integrated network reduces long-term cabling costs and can reduce the need for additional cabling at installation.

Telenium^{IP} Multi-Site Networking



Simple Administration

Now moving a phone is as simple as moving the phone into the next office and connecting it to the network. Office environments that have high turnover or frequent reallocation of office space will dramatically reduce costs for user moves, add and changes on the system. Administrators can easily modify the system using a web browser anywhere in the network or from home* reducing the need for on-site calls.

* Available when accommodations are made for Internet or other remote access into the user network.

System Capacities

Telenium^{IP} is offered in two models offering different capacities. Its modular design provides for easy upgrades as your business grows. The systems can also be networked together to achieve greater system capacity and extend the system beyond a single LAN.

Networking Features

- Four-digit Direct Dialing
- Busy Lamp Field (BLF)
- Centralized Voice Mail
- Message Waiting Indication (MWI)
- Call Transfer
- Call Forward
- Centralized Attendant
- Conference
- Name Display (station and CO)
- Absent Text Messaging

Planning for the Future

The future of telephony is found in the use of IP networks, the Internet and data communications. Telenium^{IP} provides the foundation for growth and future application integration that will not leave your company looking for a completely new communications system in the future. Planning for the future now will position your company for the exciting new technologies that will boost productivity and communication that set your company apart from the rest.

Main Processor:	MFIM	MFIME
Alarm/Door bell Inputs	2	2
Attendants	4	5
Authorization Codes	200	600
Call Park Locations	10	10
CO Line Groups	20	72
DSS Consoles per Station	3	9
Executive/Secretary Pairs	10	36
External Control Relays	2	4
External Page Zones	2	2
Station or ACD Groups	40	40
Internal Page Zones	10	35
Last Redial Bins per Station	10	10
Main Cabinet Slots	10	10
Members Per Station Group	70	70
Music Source Inputs	2	2
Power Failure Circuits-Internal	4	4
PSTN/CO Circuits	42	200
Remote Stations	35	150
Serial Port (RS-232)	2	2
SMDR Records Buffer	5,000	10,000
Stations	70	250
Station Speed Bins	20	100
System Speed Bins	800	3,000
Station Speed Groups	10	10
Voice Mail Storage Hours	20*	30*
VoIP Gateway Ports Built-in	6	6

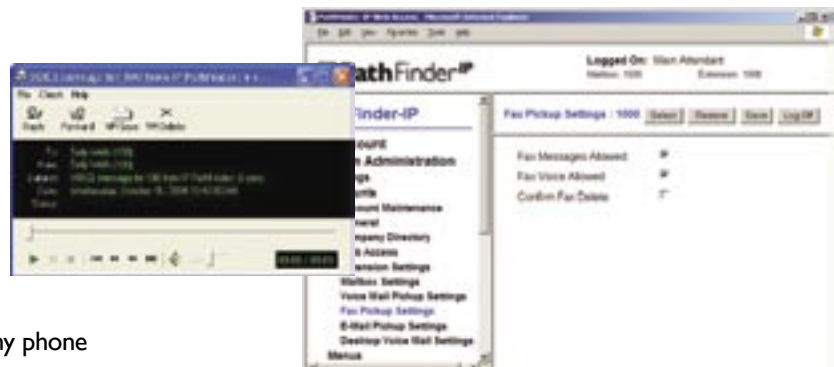
*at G.723.1 codec

PathFinder^{IP}

A complete Unified Messaging solution, the PathFinder^{IP} brings a higher level of communications integration to make you and your business more productive.

Highlighted Features

- Feature rich voice mail
- Auto attendant
- Direct calls from a desktop PC
- Forward calls to a cell phone
- Setup forward lists based on caller ID
- Receive notifications that a voice mail was left at any phone





Telenium^{IP}

Vodavi's IP-Based Telephone System

Features

User Productivity

- Alarm Signal/Door Bell
- Auto Call Release
- Auto Release Of [SPEAKER]
- Automatic Pause Insertion
- Call Announce Intercom
- Call Back
- Call Forward – All Calls/Busy/No Answer
- Call Hold/Retrieve
- Call Pick Up – Group & Directed
- Call Transfer
- Caller ID
- Calling Station Handsfree/Tone Mode Override
- Conferencing, Multi-Line & Add-On
- CPI Message Wait
- Dial By Name
- Dial Pulse Sending
- Direct Station Select/Busy Lamp Field (DSS/BLF)
- Direct Transfer Mode
- Directed Call Pick-up
- Directory Dial
- Distinctive Ringing
- DND (Do Not Disturb)
- Door Open
- Exclusive Hold
- Flexible Button Programming
- Follow Me Forward
- Full Duplex Speakerphone
- Group Listening
- Headset Mode
- Hot Keypad
- Hunt Group Ring All
- Interactive LCD Display
- Intercom Call Hold
- Intercom Mode Selector
- Internal/External & All Call Page
- IP Address Dialing
- Keypad Facility
- Last Number Redial
- LNR (Last Number Redial)
- Multi-Party Conference
- Mute
- Name & Number Display
- Off-Net Call Forwarding
- Off-Hook Voice Over
- One-Touch Record
- On-Hook Dialing
- Paging
- Pre-selected Messages
- Privacy Release
- Program Name In Display
- Programmable Speed Dial
- Remote Message Retrieval (if VM installed)
- Repeat Redial
- Ring Down/Hot Line/Off-Hook Preference
- Ringing Line Preference (RLP)
- Save Number Redial (SNR)
- SLT Message Wait Indication
- Speed Dial
- Station Relocation
- Station Speed Dial Numbers
- Station User Program Codes

- Supervisor Monitoring
- Temporary Station COS (Station Lock)
- Silent Text Messaging - Preset & Custom
- Two-Way Record (One-Touch Record)
- Unsupervised Conference
- Walking COS

Cost Control

- Abandoned Call Recording
- Account Codes (Forced Or Non-Forced)
- AOC (Advice of Charge)
- Authorization Codes
- Call Cost Display
- Class Of Service (COS)
- LCR (Least Cost Routing)
- Least Call Route Queuing
- SMDR Call Records
- Toll Restriction By Station & CO Line
- Traffic Analysis - Attendant
- Traffic Analysis - Calls
- Traffic Analysis – CO/IP
- Traffic Analysis – H/W Unit
- Verified Account Codes

Customized Call Processing

- Auto Attendant Announcements
- Auto Attendant Transfer
- Automatic Call Distribution (ACD)
- Automatic Hold
- Automatic Night Mode Activation
- Automatic Privacy
- Broker Call
- Call Coverage
- Call Park
- Call Queuing
- Call Waiting/Camp-On
- Calling/Called Party Identification
- CCR (Caller Controlled Routing)
- CO Line Name In Display
- Dialing Restrictions
- Direct Inward Dialing (DID)
- Direct Inward System Access (DISA)
- Executive/Secretary Pairs
- External Day/Night Ring
- Hold – Exclusive/Preference/System
- Hold Recall
- Hot Line/Ring Down
- Incoming Calling Line Identification
- Intercom Transfer
- Number of Calls In Queue
- Preferred Line Answer
- Preset Call Forwarding / Overflow Ringing
- Prime Line Immediately/Delayed
- Private Line
- RAN Announcements via Digital Voice Mail
- Station Identification
- Station or Pilot Hunt Groups
- UNA (Universal Night Answer)
- Uniform Call Distribution (UCD)
- User Selectable Distinctive Ringing
- Voice Mail & Auto Attendant Integration

System Administration

- Background Music
- Battery Back-up (Memory)
- Baud Rate Assignments
- Centrex/PBX Support
- CO Distinctive Ringing
- CO Flexible Port Assignment
- CO Line - Access
- CO Line - Identification
- CO Line - Incoming Ring Assignment
- CO Line - Loop Supervision
- CO Line - Queue
- Database Administration
- Database Printout (Dump)
- Day/Night/Timed Ring Mode
- Day/Timed & Night Station COS
- Delay CO/IP Ring
- External Paging Interface
- Flexible Numbering
- Intercom Lock-Out
- Inter-Digit Time-Out
- Internal & External Preset Station
- LBC (Loud Bell Control)
- MOH (Music-On-Hold)
- Name/Number Translation Table
- PBX Dialing Codes
- Relay Programming
- Remote Administration
- Remote System Monitor and Maintenance
- SMDI (Simplified Msg. Desk Interface)
- Station Groups
- System Clock Set
- System Hold
- System Reset
- System Speed Dial
- System Speed Zone Group
- T-1 /ISDN Alarm Programming
- Universal Night Answer
- User Programming Name In Display
- Voice Mail Message Count
- Web-based Diagnostic/Maintenance

Attendant Control

- 911 Attendant Alert
- Alternate/Multiple Attendants
- Attendant Assignment/Features
- Attendant Disable Outgoing Calls
- Attendant Display / ACD Transfer Display
- Attendant Override / Barge-In
- Attendant Recall
- Attendant Station Program Codes
- DSS Consoles
- Night Service Control (Auto/Manual)
- One Touch Call Transfer
- Transfer Calls/Hold Recall